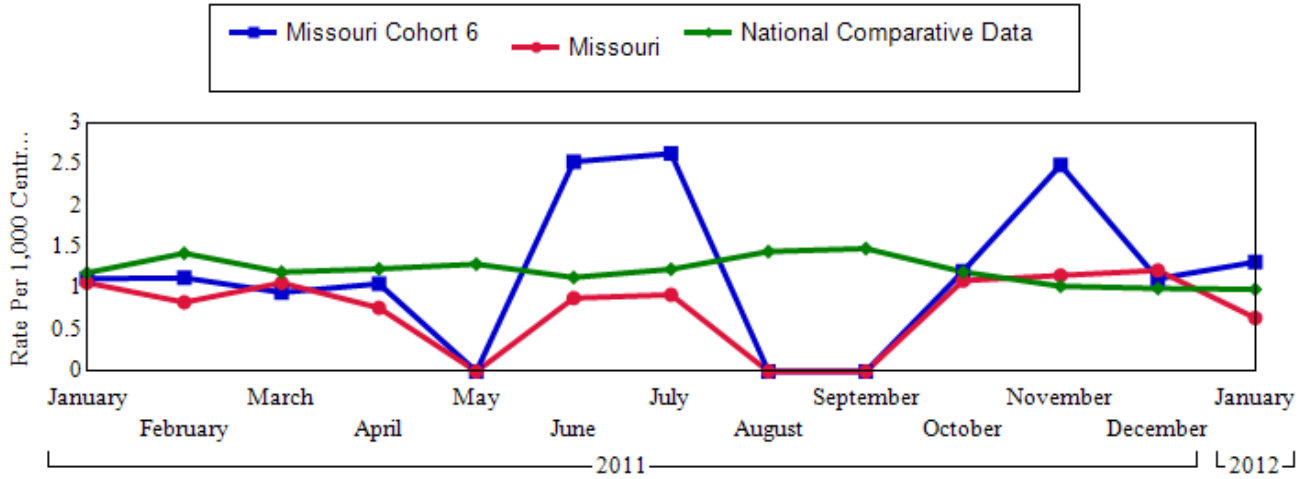


CLA - Blood Stream Infection

Missouri Cohort 6

1/1/2011 - 1/31/2012



	Missouri Cohort 6			Missouri				National Comparative Data			
	Numerator	Denominator	Rate Per 1,000 Central Line Days	Units Reporting	Numerator	Denominator	Rate Per 1,000 Central Line Days	Units Reporting	Numerator	Denominator	Rate Per 1,000 Central Line Days
2011 January	1	891	1.12	25	3	2,793	1.07	1282	245	205,447	1.19
2011 February	1	883	1.13	24	2	2,391	.84	1281	272	190,192	1.43
2011 March	1	1,047	.96	23	3	2,798	1.07	1270	254	211,379	1.2
2011 April	1	943	1.06	22	2	2,599	.77	1252	242	194,962	1.24
2011 May	0	980	0	24	0	2,522	0	1249	248	191,044	1.3
2011 June	2	788	2.54	23	2	2,254	.89	1224	205	180,283	1.14
2011 July	2	759	2.64	23	2	2,155	.93	1143	204	164,990	1.24
2011 August	0	655	0	20	0	1,543	0	1085	228	157,188	1.45
2011 September	0	743	0	20	0	1,628	0	1011	210	141,239	1.49
2011 October	1	824	1.21	18	2	1,820	1.1	861	151	125,425	1.2
2011 November	2	801	2.5	18	2	1,723	1.16	792	116	112,499	1.03
2011 December	1	891	1.12	17	2	1,636	1.22	733	107	106,479	1.
2012 January	1	755	1.32	14	1	1,546	.65	487	75	75,489	.99
	13	10,960	1.19		21	27,408	.77		2,557	2,056,616	1.24